

[DRI TYPE]

面實裝 POWER CHOKE CORES 基座型

Nippon Base Type

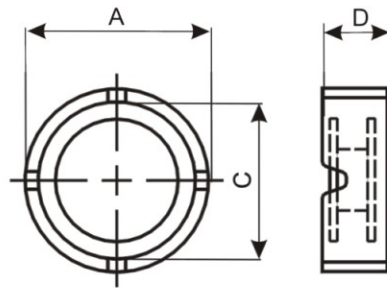


Fig. 1

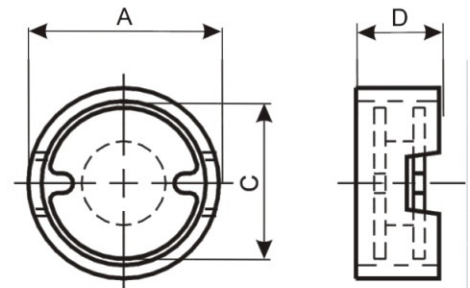


Fig. 2

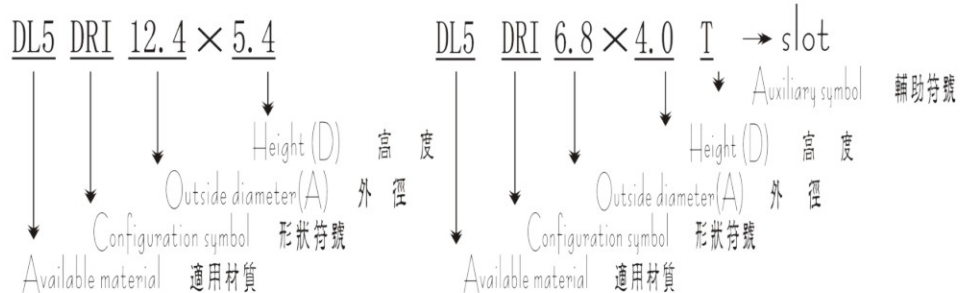
FEATURES 特長

提供大定格電流，高電感值，防止高頻輻射干擾之閉磁路，基座型之磁芯。

Base type power choke cores provide large rated current, high inductance, magnetically shielded structure prevents interference from peripheral components.

PRODUCT IDENTIFICATION

產品識別碼



USEAGE 用途

- 冷光手表
- ALARM
- 小型通信器
- 手提电脑
- Cold light watch;
- Alarm;
- Small size communication equipment;
- Notebook PC.

DIMENSION 尺寸

Core Order Code	CORE			DIMENSION			UNIT:m/m
	A	C	D	DR	RI	Fig	
DRI 12.4x5.4	12.4±0.2	10.72±0.2	5.40±0.2	10x5.2	12.4x10.72x5.40	1	
DRI 12.3x7.1	12.3±0.2	10.60±0.2	7.10±0.2	9.85x7.1	12.3x10.60x7.10	1	
DRI 12.4x7.25	12.4±0.2	10.72±0.2	7.25±0.2	10x7.1	12.4x10.72x7.25	1	
DRI 6.8x2.7 T	6.8±0.15	5.85±0.2	2.7±0.15	5.4x2.7 R	6.8x2.3 T	2	
DRI 6.8x4.0 T	6.8±0.15	5.85±0.2	4.0±0.20	5.4x4.0 R	6.8x3.8 T	2	
DRI 6.8x7.7 T	6.8±0.15	5.85±0.2	7.7±0.20	5.4x7.7 R	6.8x7.5 T	2	
DRI 7.6x2.2	7.6±0.15	10.72±0.2	2.2±0.15	5.6x2.2	7.6x1.95	2	

[DRI TYPE]

Nippon Base Type

Tolerance of Inductance:
電感值公差

DRI 6.8x2.7 T :
1.0~100 μH±20%

DRI 6.8x4.0 T :
1.0~560 μH±20%

面實裝 POWER CHOKE CORES 基座型 STANDARD SPECIFICATIONS OF DRI (日規) POWER CHOKE CORES 面實裝基座型, 電感值, 直流抵抗, 定格電流規格表

Inductance 電感 L (μH)	DCR(Ω)Max. 直流抵抗			Rated D.C.Current(A) 定格電流				
	DRI 12.4x5.4	DRI 12.3x7.1	DRI 12.4x7.25	DRI 12.4x5.4	DRI 12.3x7.1	DRI 12.4x7.25		
1.0								
1.5								
2.2								
3.3								
4.7								
6.8								
10								
15								
22								
33								
47								
68								
100								
150								
220								
330								
470								
680								
1000								
Inductance 電感 L (μH)	DCR(Ω)Max. 直流抵抗				Rated D.C.Current(A) 定格電流			
	DRI 6.8x2.7T	DRI 6.8x4.0T	DRI 6.8x7.7T	DRI 7.6x2.2	DRI 6.8x2.7T	DRI 6.8x4.0T	DRI 6.8x7.7T	DRI 7.6x2.2
1.0	0.019	0.020			3.12	2.80		
1.5	0.023	0.024			2.85	2.59		
2.2	0.028	0.028			2.66	2.38		
3.3	0.035	0.034			2.26	2.14		
4.7	0.043	0.039			1.96	1.96		
6.8	0.055	0.050			1.76	1.79		
10	0.08	0.055			1.34	1.63		
12	0.09	0.073			1.23	1.42		
15	0.12	0.081			1.09	1.33		
18	0.13	0.102			0.99	1.15		
22	0.15	0.115			0.90	1.09		
27	0.21	0.159			0.81	0.91		
33	0.25	0.182			0.72	0.84		
39	0.31	0.199			0.67	0.80		
47	0.35	0.221			0.60	0.75		
58	0.43	0.306			0.55	0.64		
68	0.52	0.345			0.50	0.60		
82	0.60	0.390			0.46	0.57		
100	0.79	0.432			0.41	0.50		
120		0.44				0.47		
150		0.73				0.40		
180		0.78				0.39		
220		0.94				0.33		
270		1.25				0.31		
330		1.40				0.27		
390		1.52				0.27		
470		1.70				0.25		
560		2.39				0.22		

- ▶ This indicates the value of current when the inductance is 10% lower than its initial value at D.C. Superposition or the value of D.C. Current when temperature rise Δt=40°C whichever is lower.
- ▶ For any DRI (日規) core requirement not listed in the catalog, please feel free to contact with us for more information.

[DRI TYPE] 面實裝 POWER CHOKE CORES 基座型

INDUCTANCE VS. CURRENT CURVE

Inductance Range: (1.0 μ H~1000 μ H)

TYPICAL ELECTRICAL CHARACTERISTICS CURVE:

DRI 12.4X5.4 ~ DR 6.8X7.7 T

TEST INSTRUMENT ZENTECH 101 & 301A

INDUCTANCE VS. CURRENT (REFERENCE)

電感值 - 電流(參考值)

